

0614-007

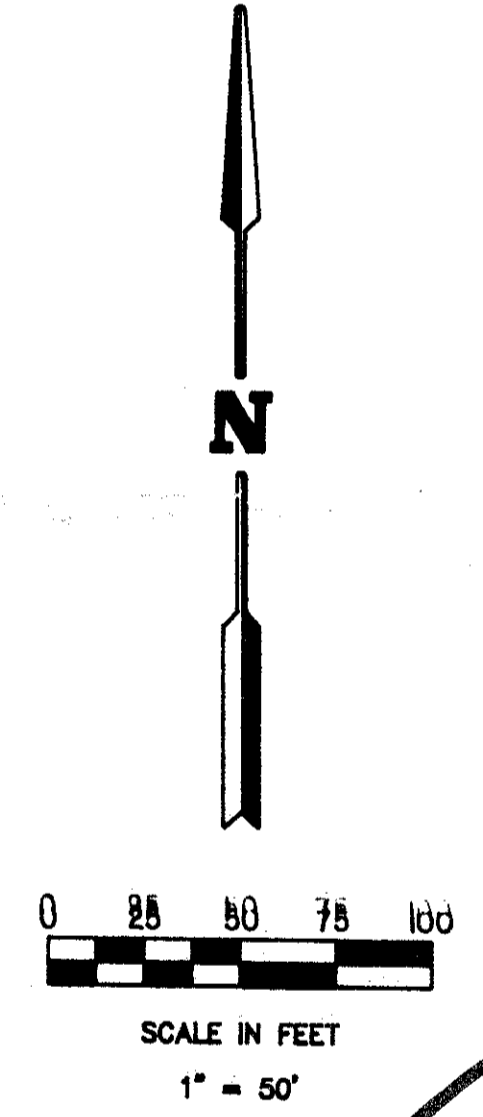
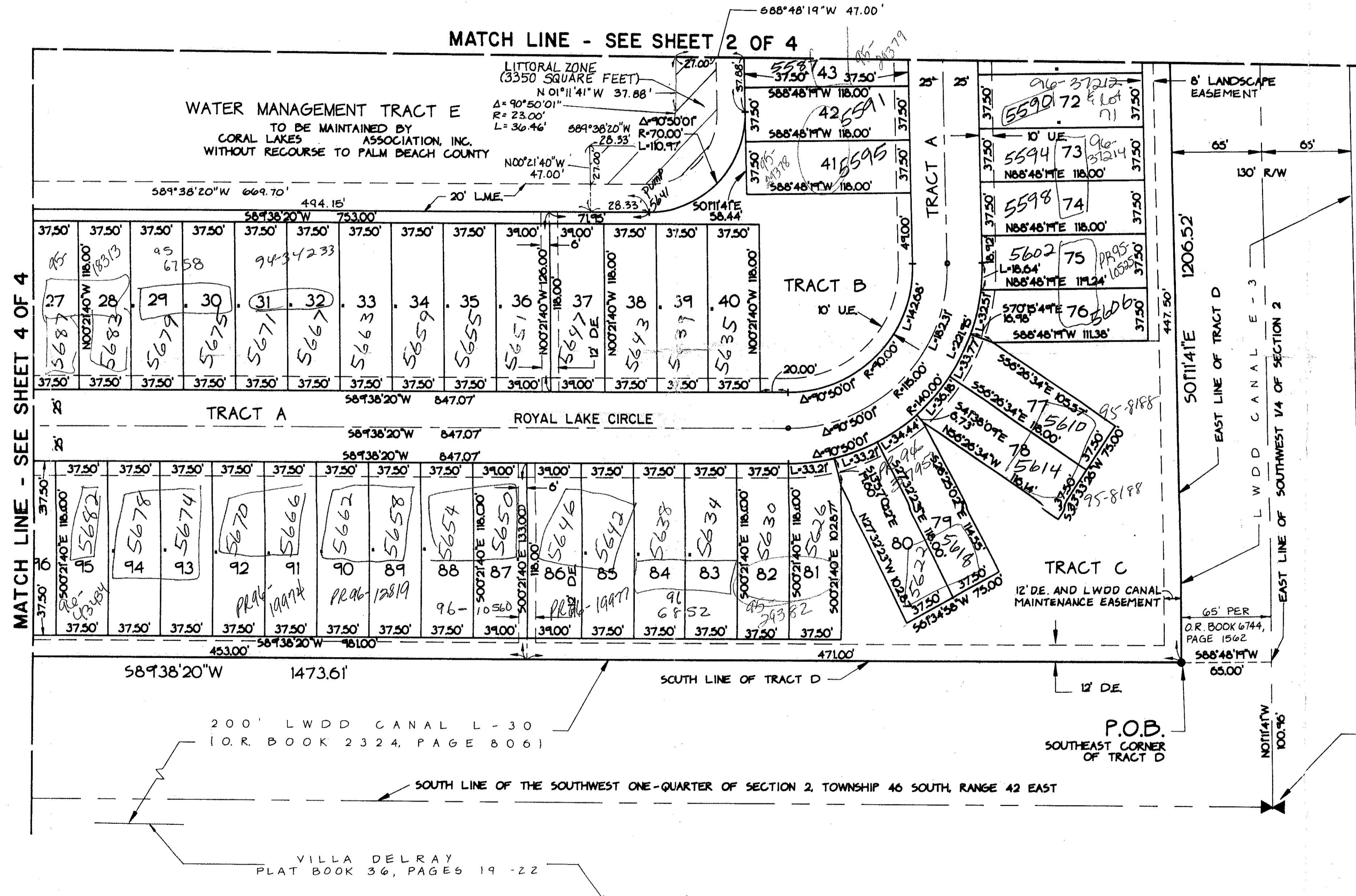
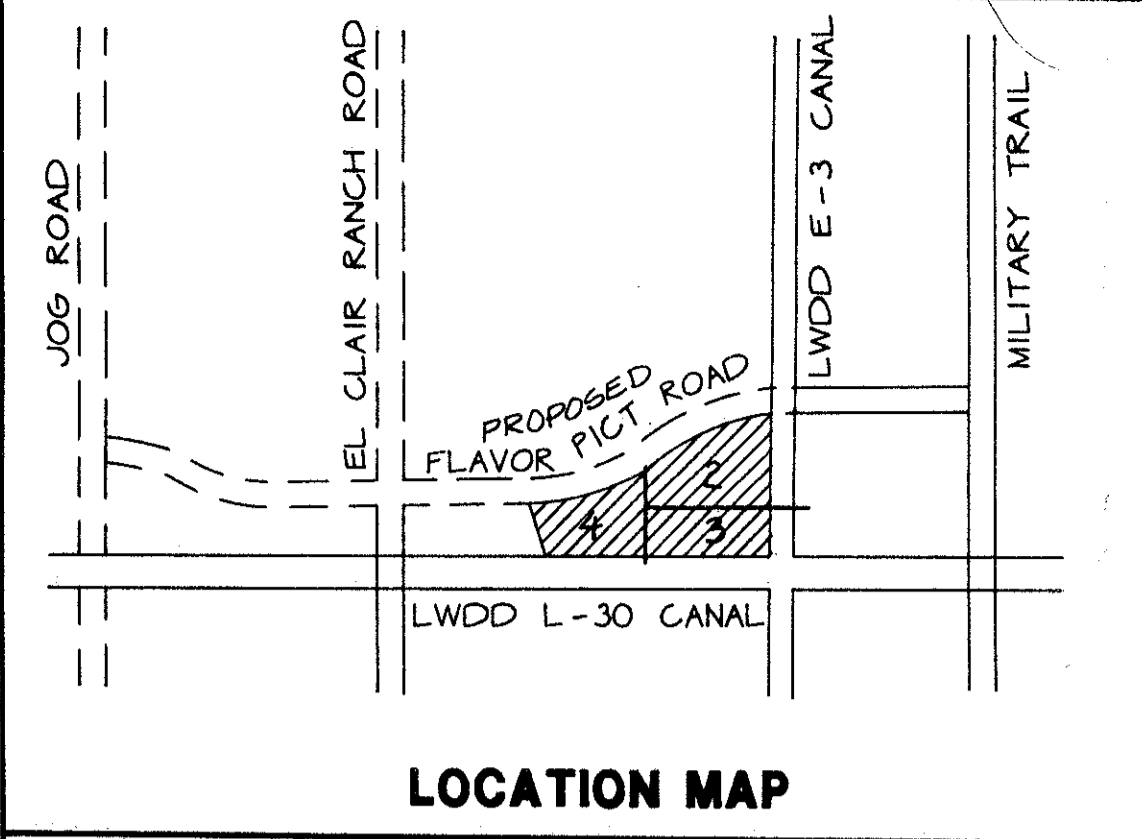
131

CORAL LAKES V, A P.U.D.

A REPLAT OF A PORTION OF TRACT D OF THE PLAT OF CORAL LAKES, AS RECORDED IN PLAT BOOK 67, PAGES 197 THROUGH 198 INCLUSIVE, AND A PORTION OF FLAVOR PICT ROAD RIGHT-OF-WAY AS RECORDED IN OFFICIAL RECORD BOOK 6872, PAGES 1000 THROUGH 1001 INCLUSIVE ALL IN THE PUBLIC RECORDS OF PALM BEACH COUNTY, FLORIDA, ALL IN SECTION 2, TOWNSHIP 46 SOUTH, RANGE 42 EAST, PALM BEACH COUNTY, FLORIDA

THIS INSTRUMENT PREPARED BY JAMES E. PARK, P.L.S.
 WILLIAMS, HATFIELD & STONER, INC. - ENGINEERS PLANNERS SURVEYORS
 1325 SOUTH CONGRESS AVENUE, SUITE 118, BOYNTON BEACH, FLORIDA 33426

SHEET 3 OF 4



PET. 614-013
 ALLOC. #0001

SUBDIVISION # CORAL LAKES
 BOOK 71 PAGE 131
 FLOOD ZONE PLANNING #205D
 ZONE # 36
 SEE MAP # 13
 REP NAME COUR. 1A2, 42

0614-007
 CORAL LAKES V 72/131